



Produzioni, qualità e mercato



***Qualità delle produzioni nazionali
di frumento duro e tenero***

Maria Grazia D'Egidio

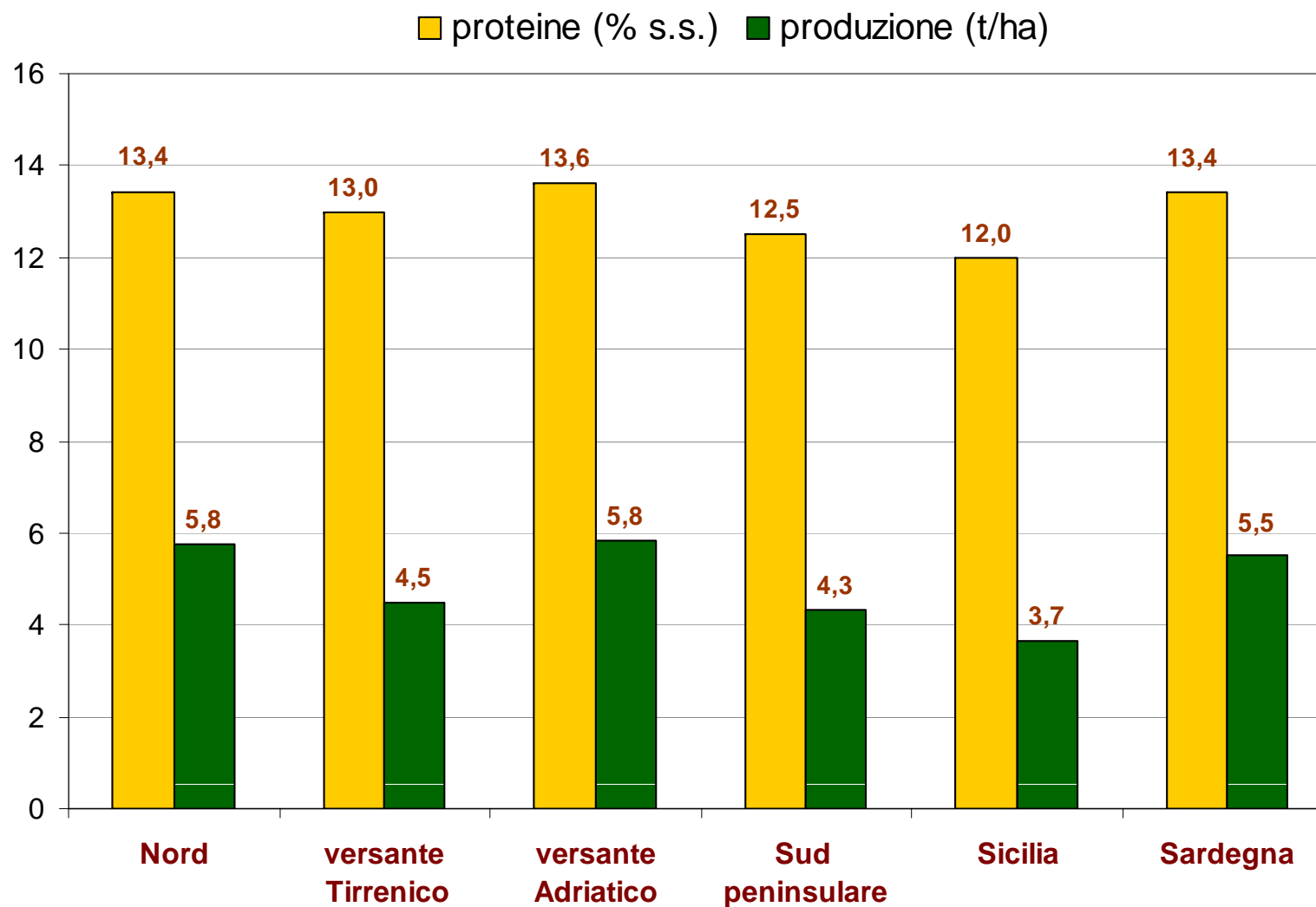
CRA-Unità di Ricerca per la Valorizzazione Qualitativa dei Cereali

Bologna, 13 gennaio 2011

Rete nazionale di confronto varietale frumento duro a.a. 2009-2010

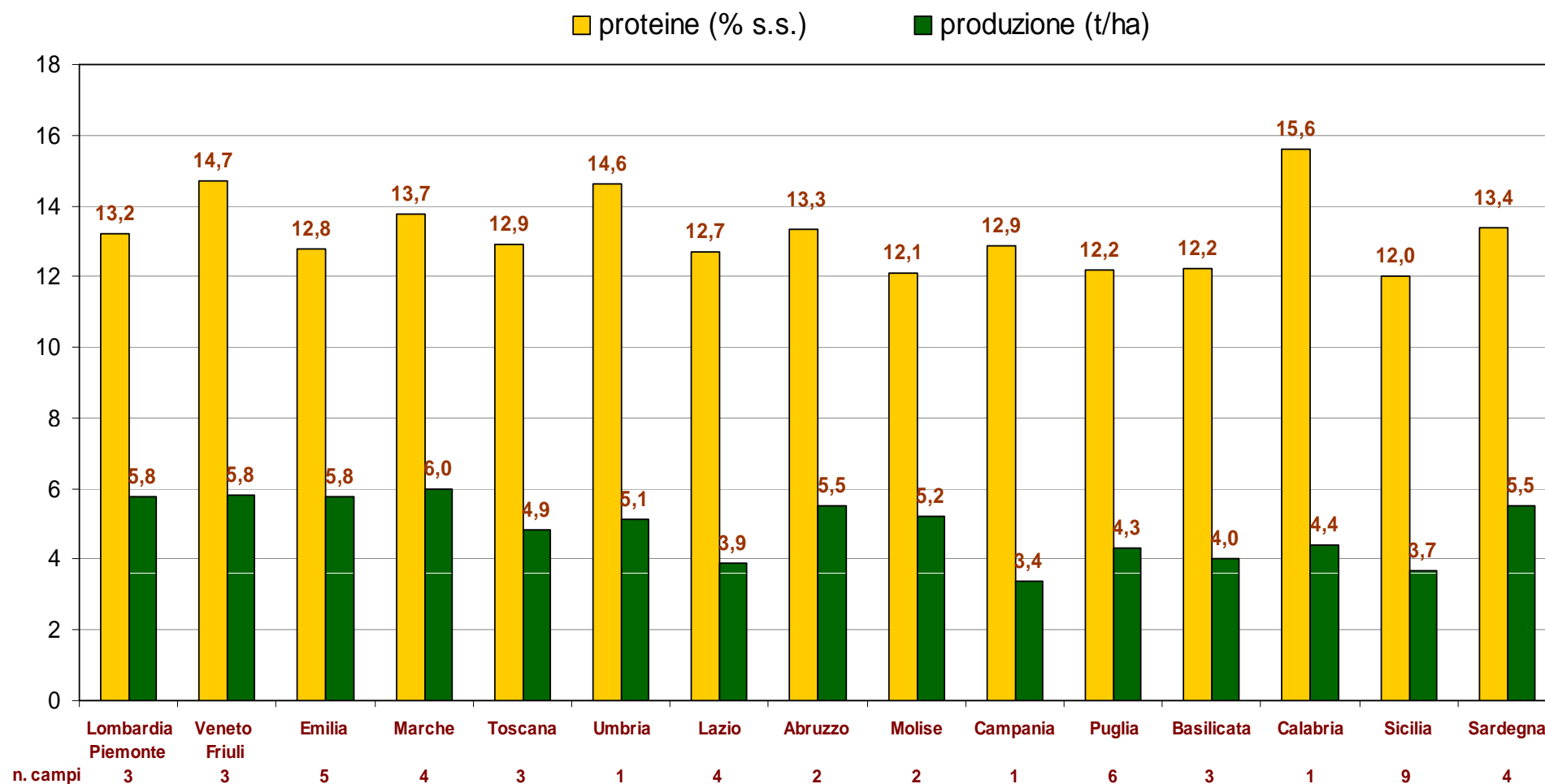
(51 campi in 6 areali – 39 cultivar)

Valori medi per areale

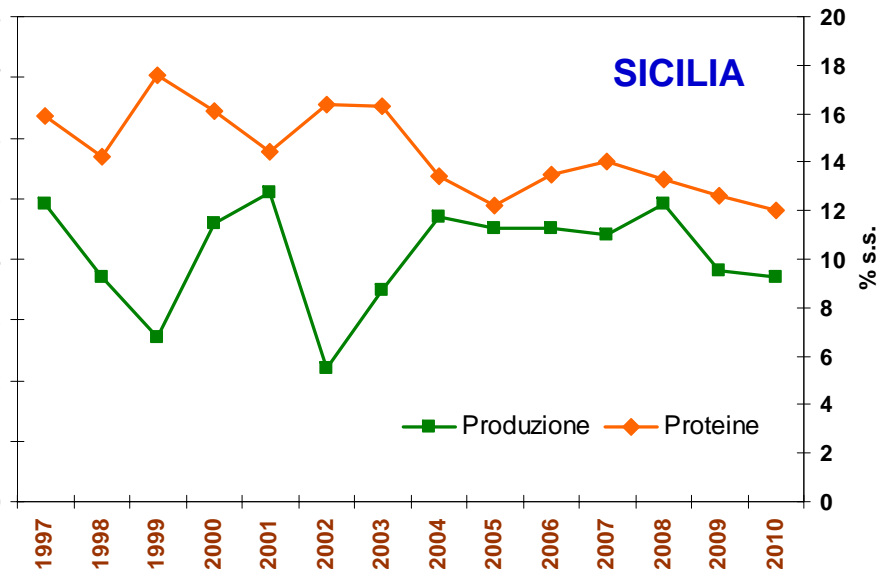
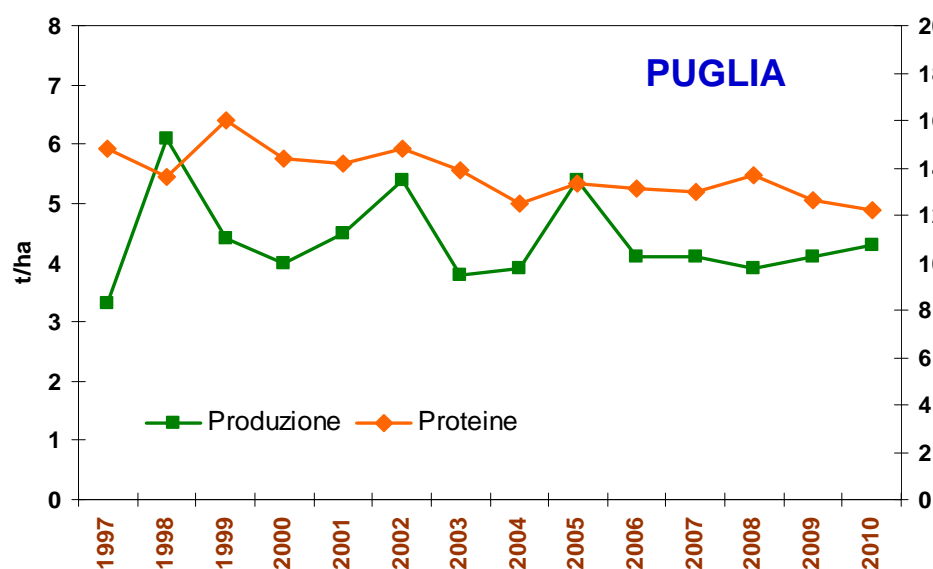
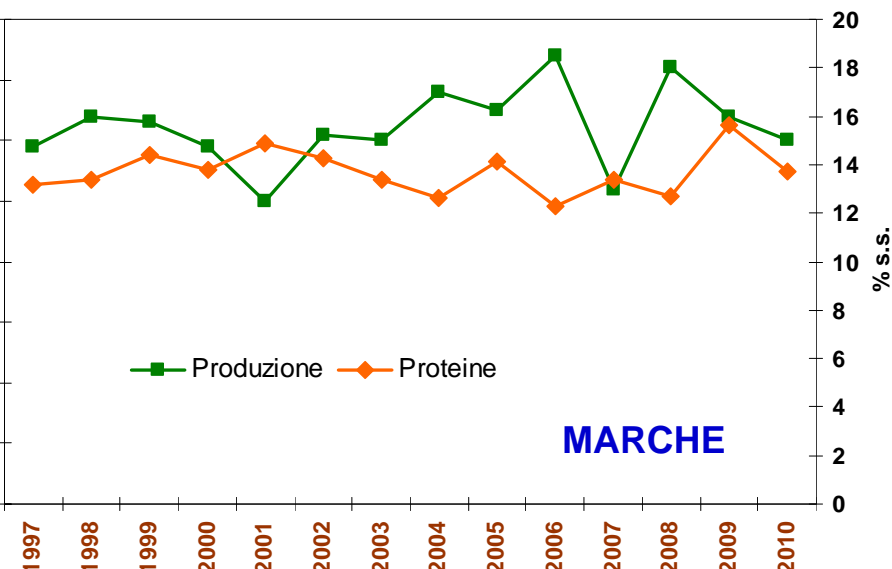
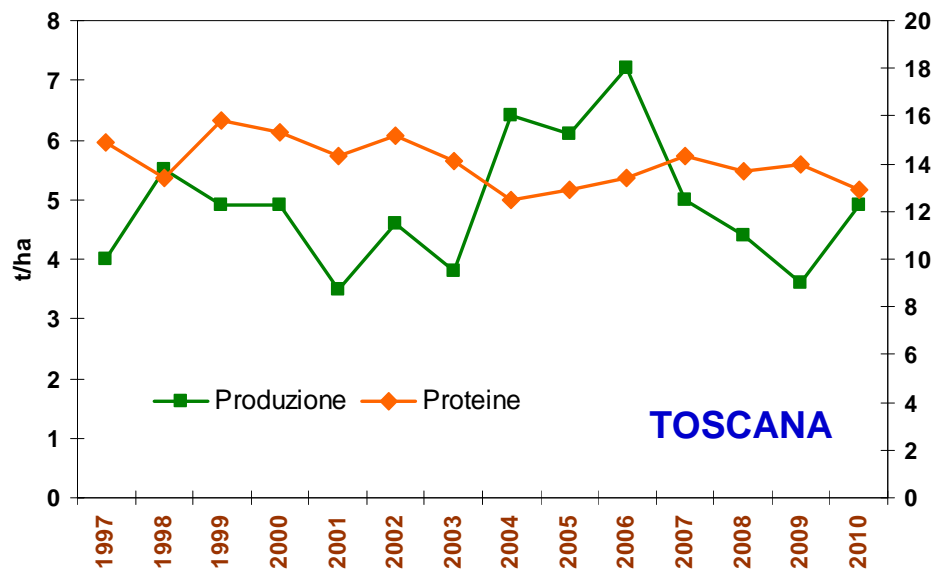


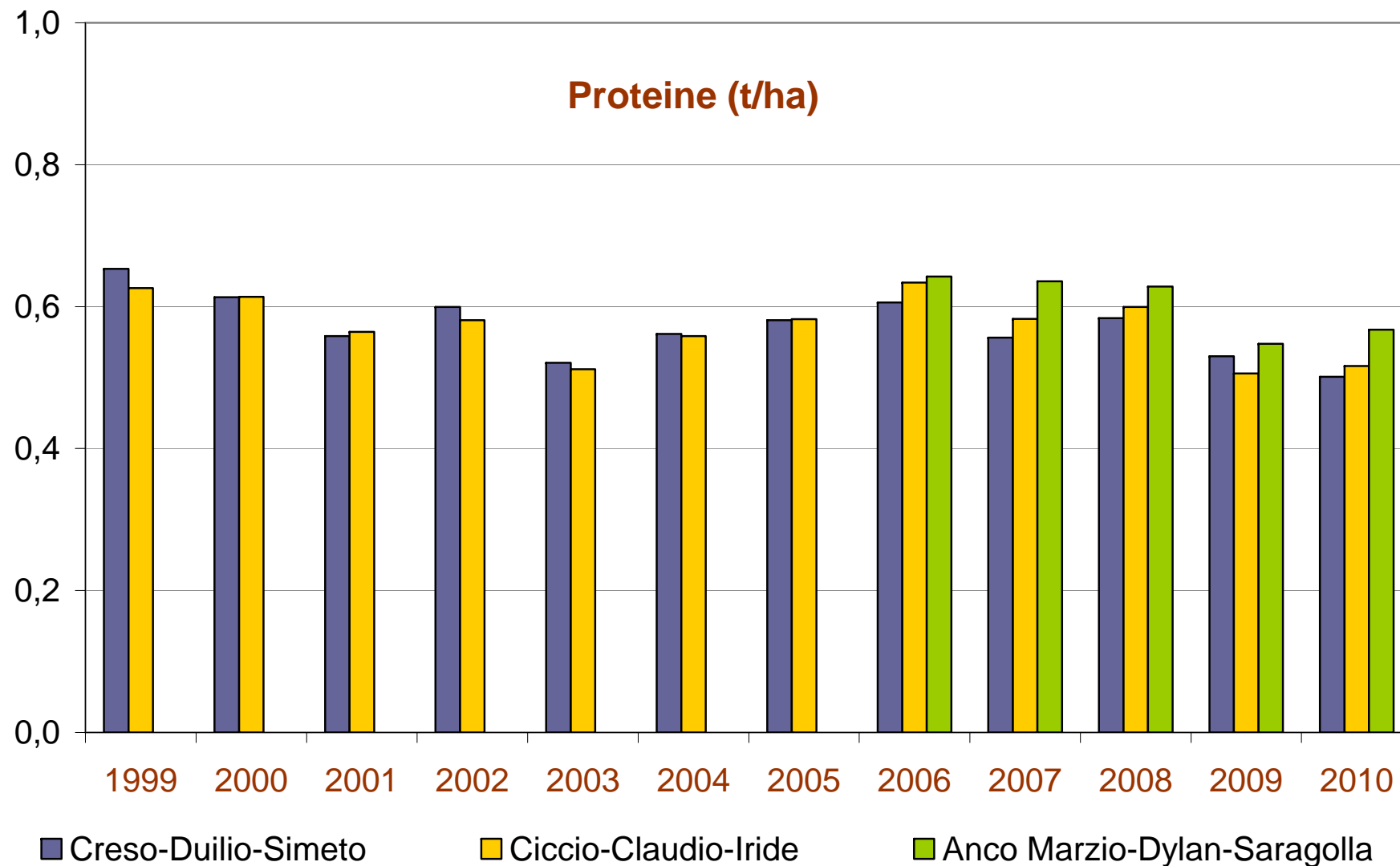
Rete nazionale di confronto varietale frumento duro a.a. 2009-2010

Valori medi per regione



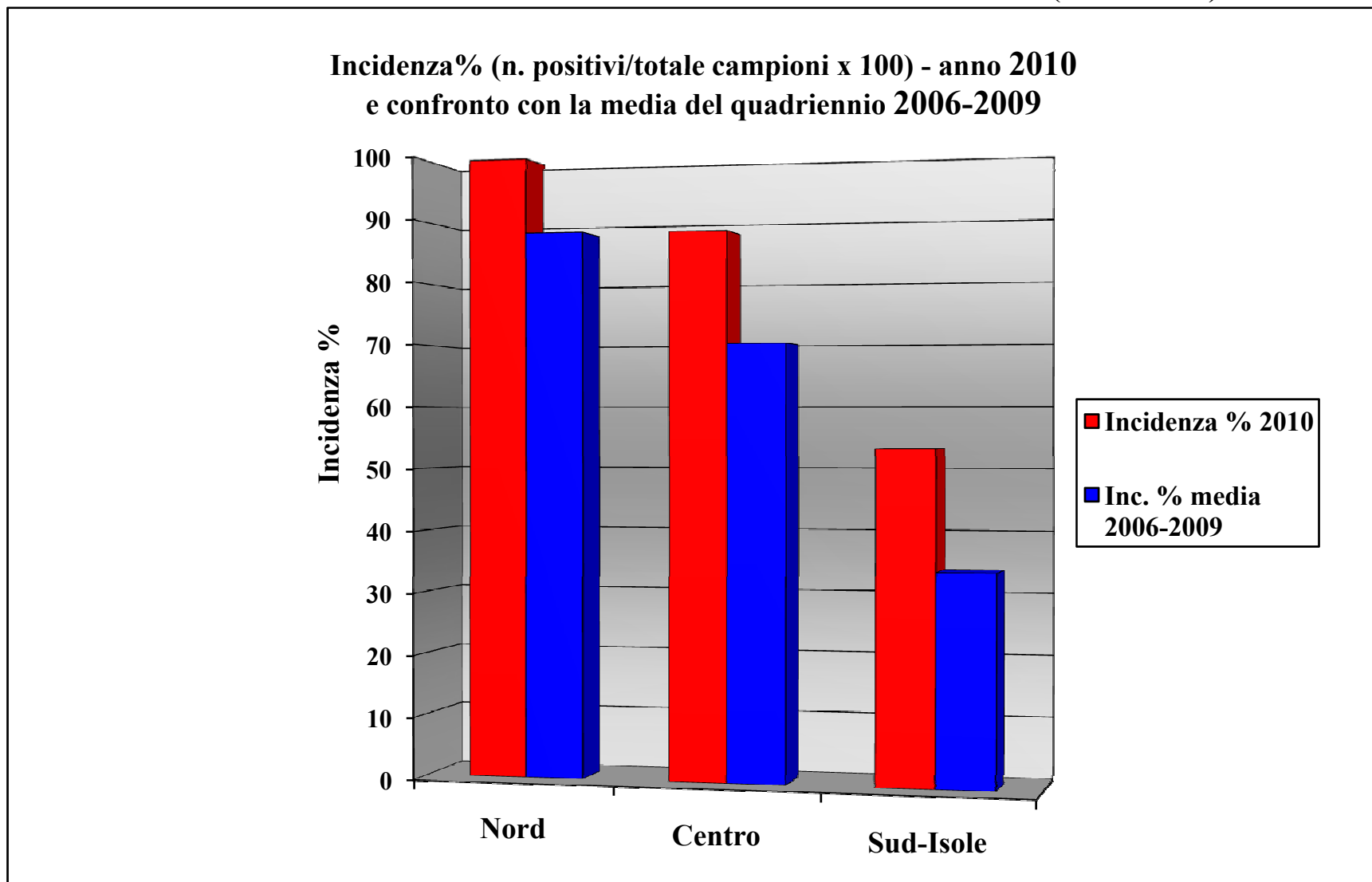
Poliennio 1997-2010 (valori medi)



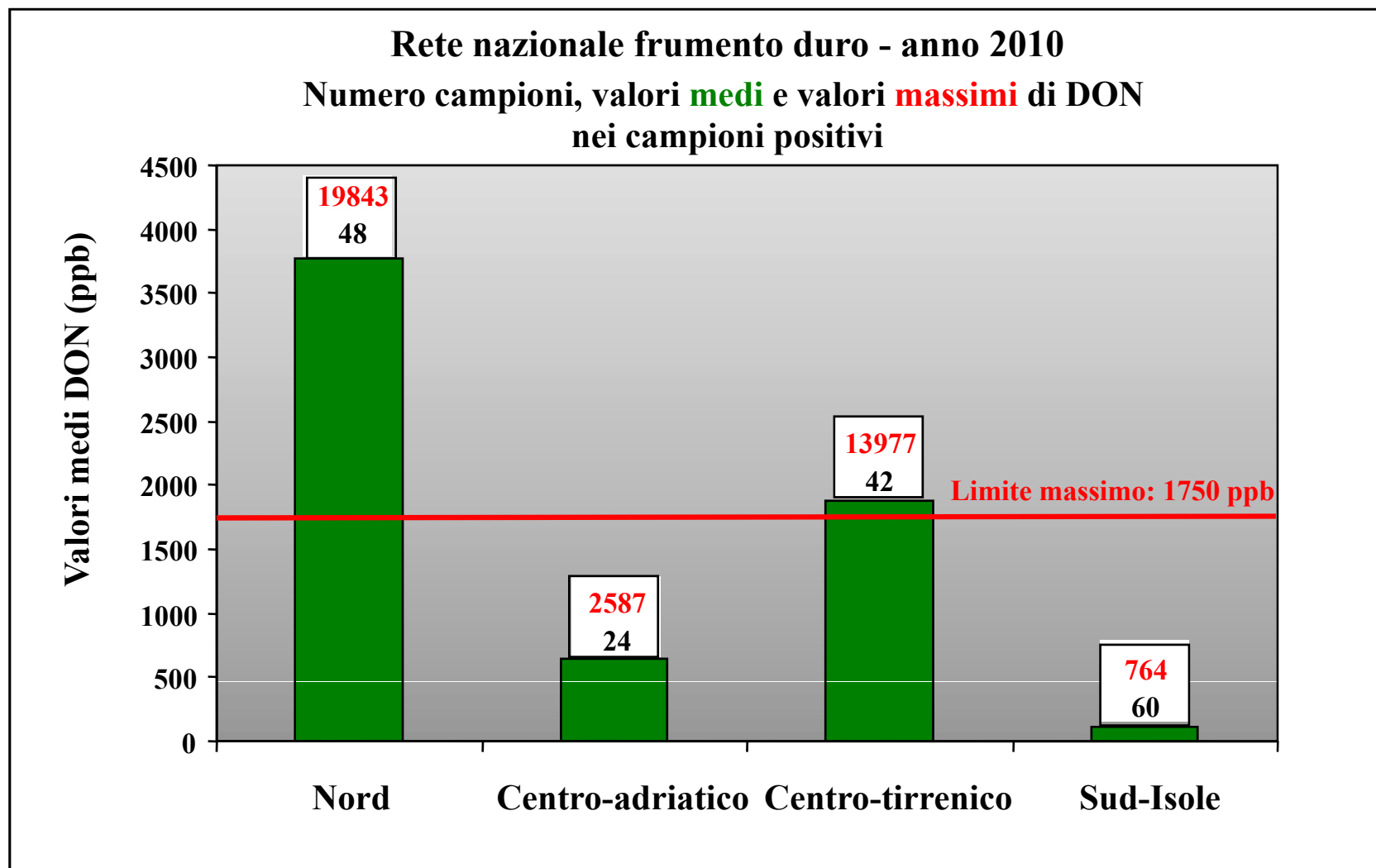
**Confronto di varietà di vecchia e nuova costituzione
nel poliennio 1999-2010: proteine per ettaro**

Qualità igienico-sanitaria: contaminazione da DON

(Test ELISA)



Qualità igienico-sanitaria: contaminazione da DON



Poliennio 1998-2010 (valori medi)

Anno	Campioni (n°)	Peso Ettolitrico (Kg/hL)	Proteine (% s.s.)
1998	996	82.8 ± 2.6	12.4 ± 1.6
1999	1146	80.9 ± 3.2	13.7 ± 1.7
2000	1156	81.6 ± 2.9	13.1 ± 1.8
2001	919	80.9 ± 3.0	12.9 ± 1.7
2002	777	81.0 ± 3.4	13.7 ± 1.7
2003	856	81.2 ± 2.7	12.9 ± 1.4
2004	964	81.6 ± 3.0	11.9 ± 1.3
2008	569	82.1 ± 3.0	12.4 ± 1.6
2009	481	80.2 ± 3.4	12.6 ± 1.5
2010	785	81.3 ± 3.5	11.8 ± 1.5

Monitoraggio 2010:

10 regioni

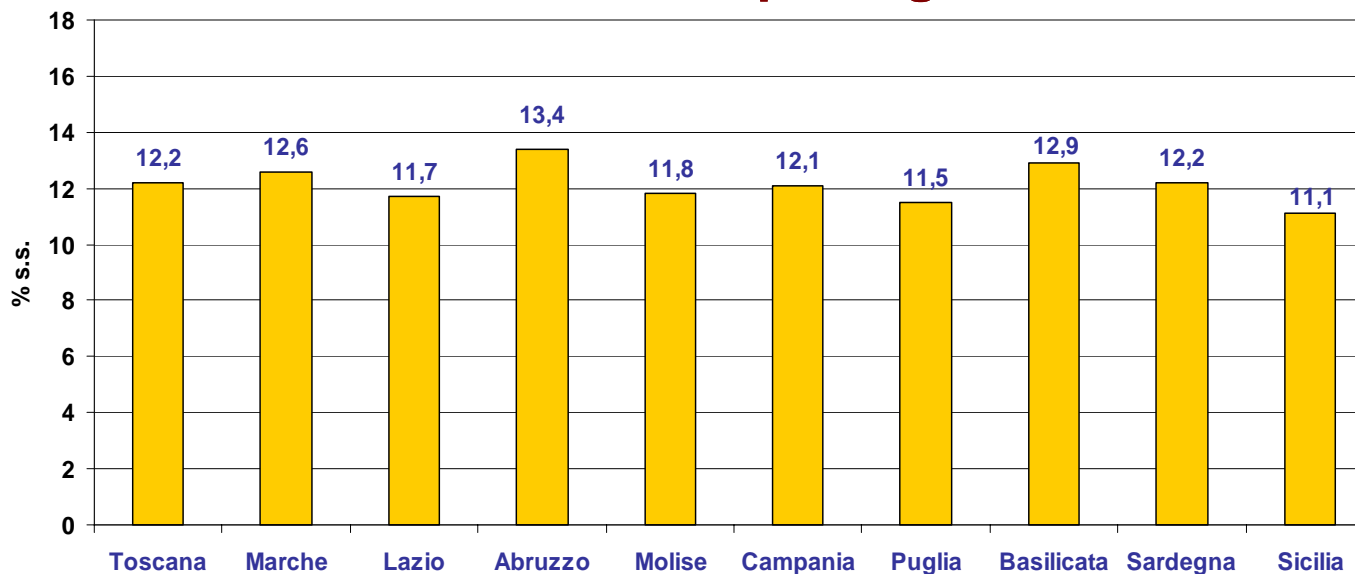
785 campioni (coltivazione convenzionale)

65 cultivar totali

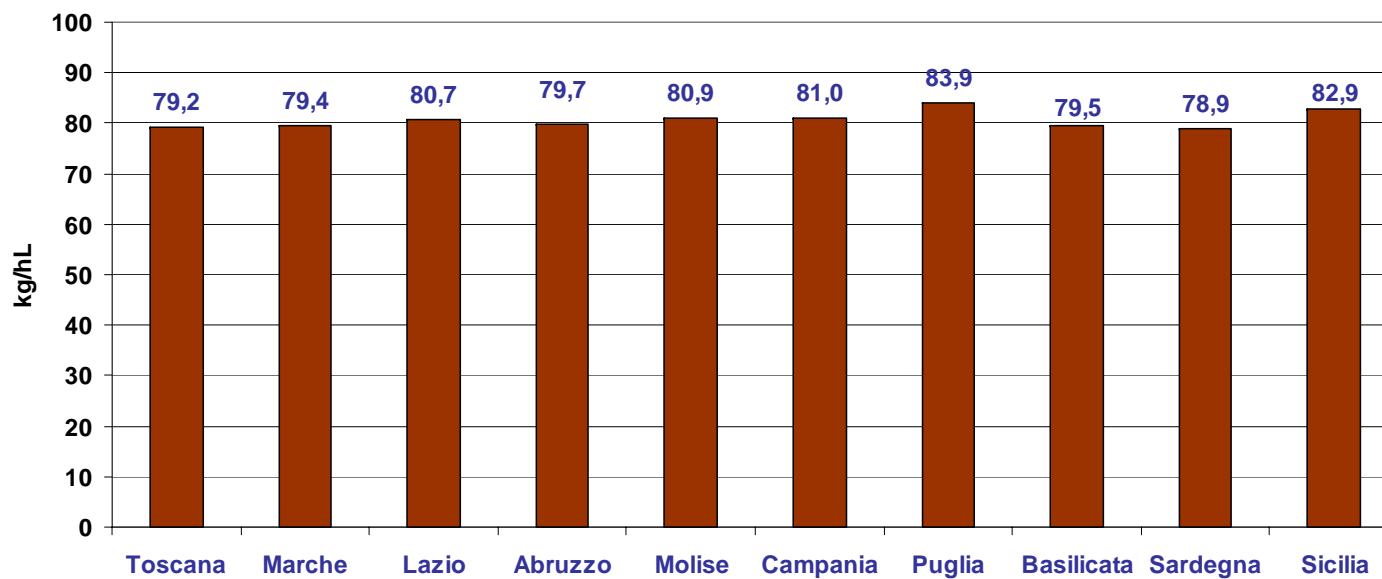
Monitoraggio qualitativo frumento duro a.a. 2009-2010

Valori medi per regione

Proteine



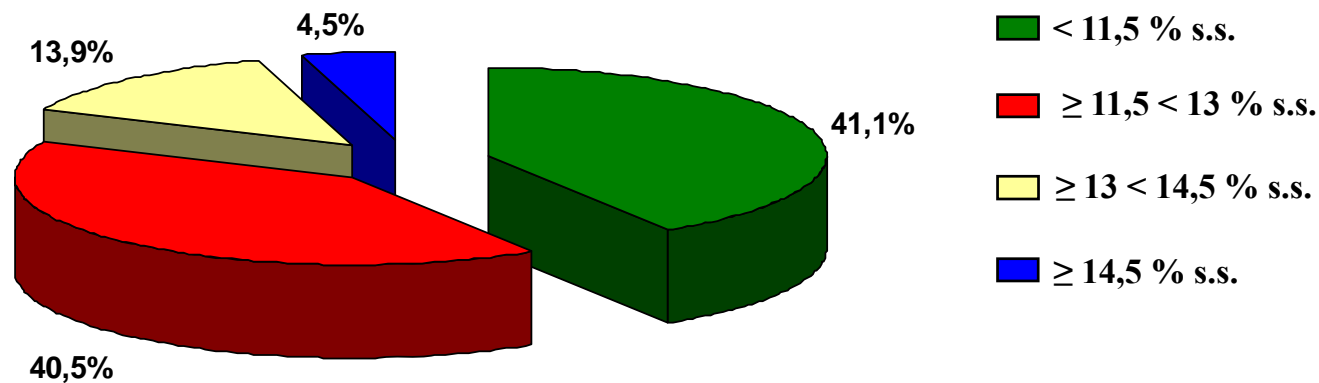
**Peso
Ettolitrico**



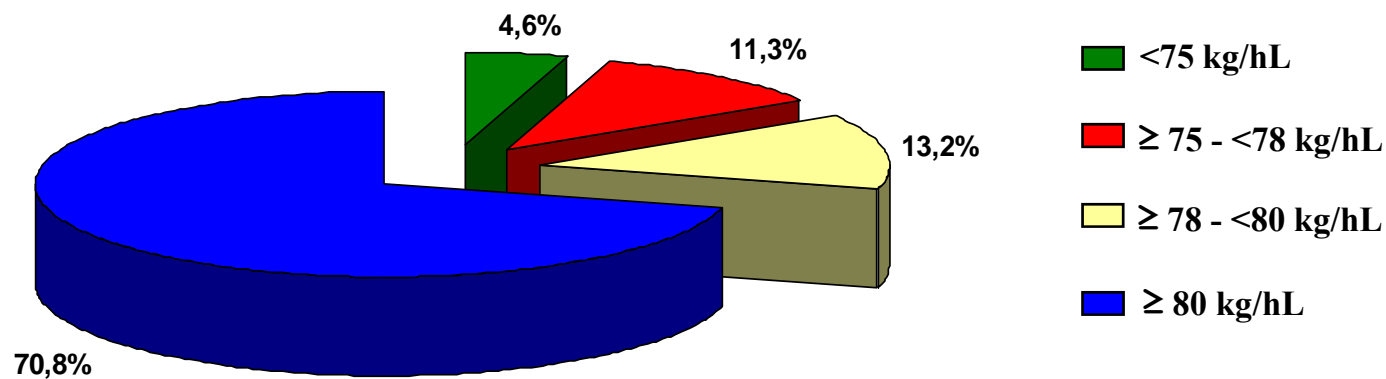
Monitoraggio qualitativo frumento duro a.a. 2009-2010

classificazione delle principali caratteristiche qualitative (norma UNI 10709)

Proteine

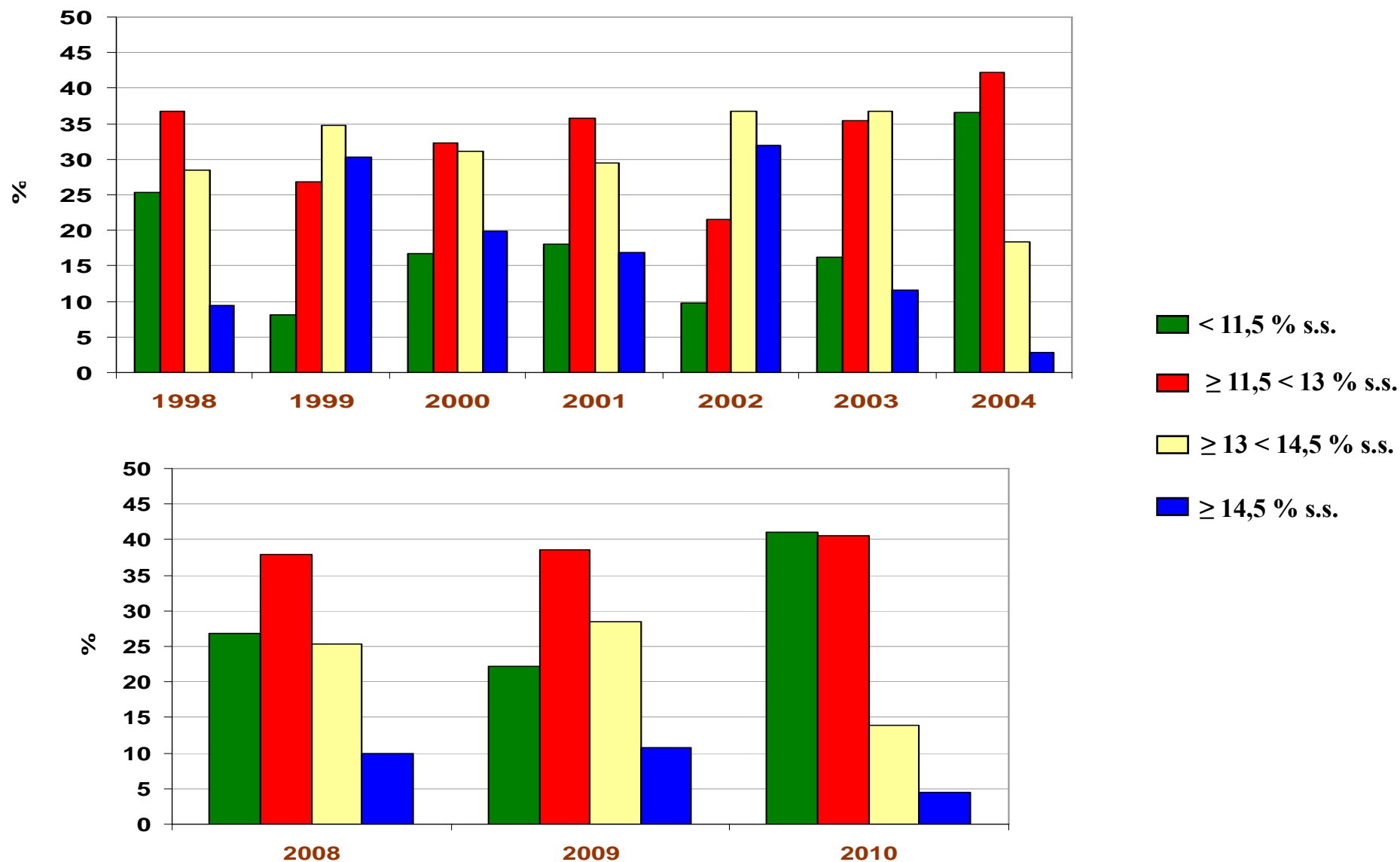


**Peso
Ettolitrico**



Monitoraggio qualitativo frumento duro

Classificazione dei campioni nel poliennio 1999-2010 per contenuto in proteine (norma UNI 10709)





Produzioni, qualità e mercato

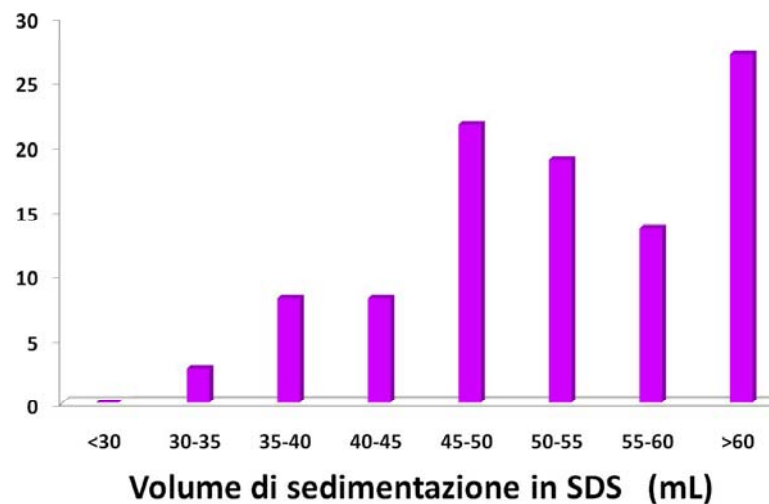
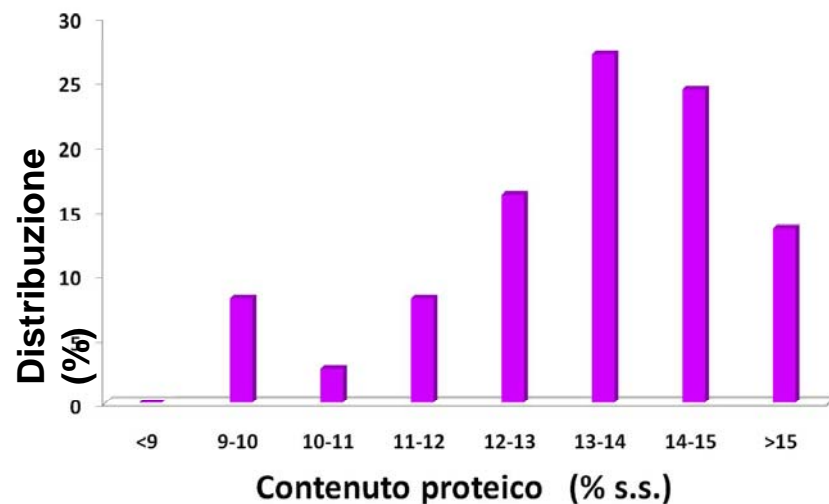
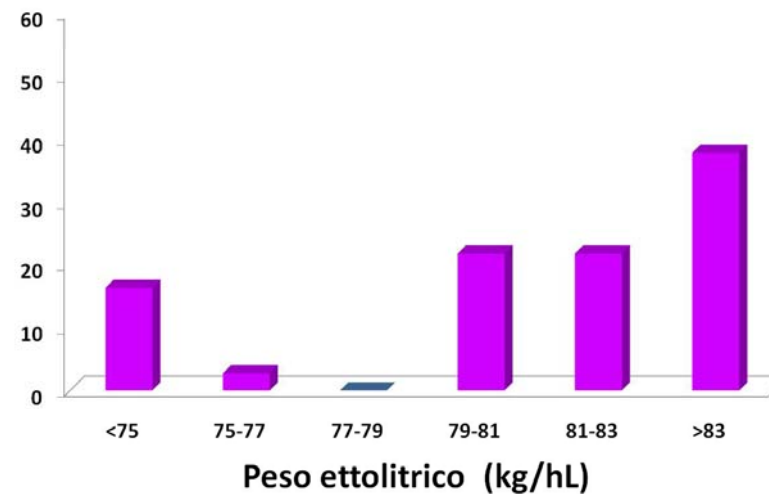
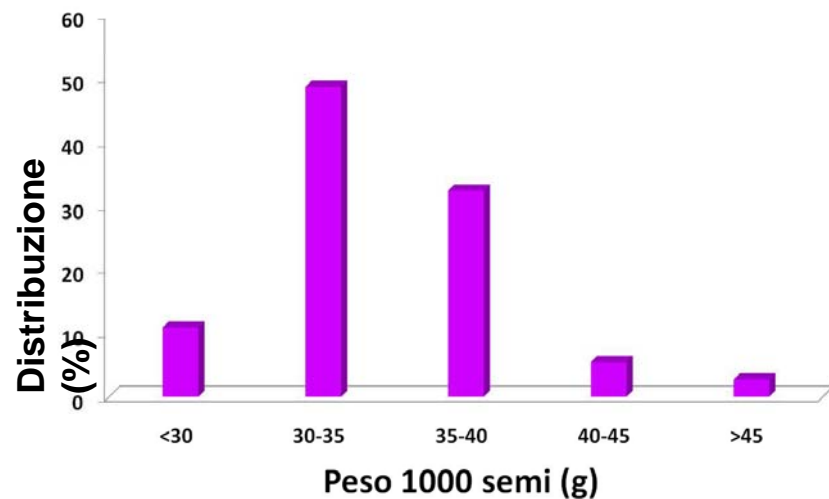
Frumento tenero



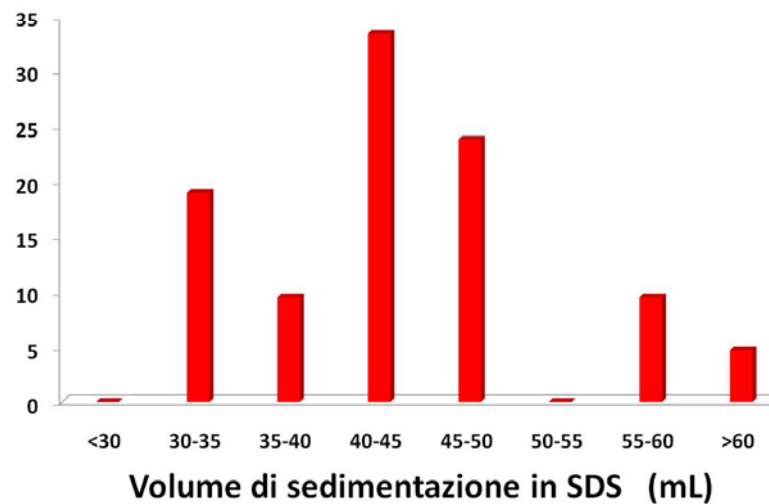
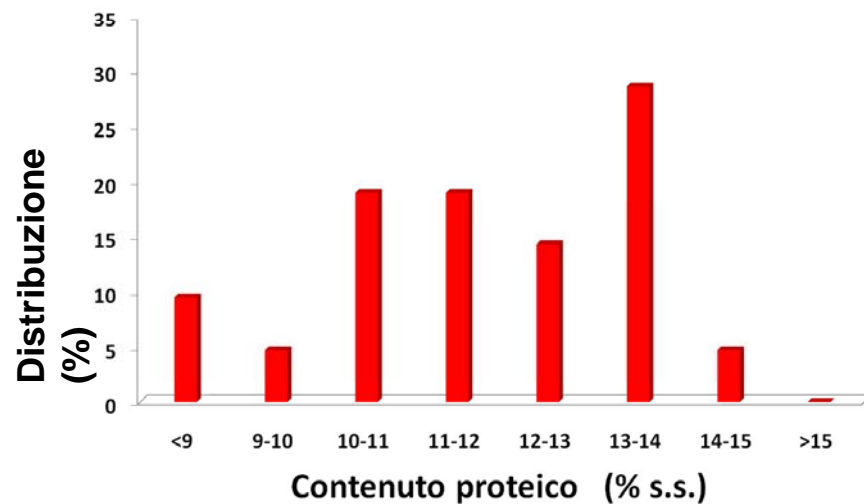
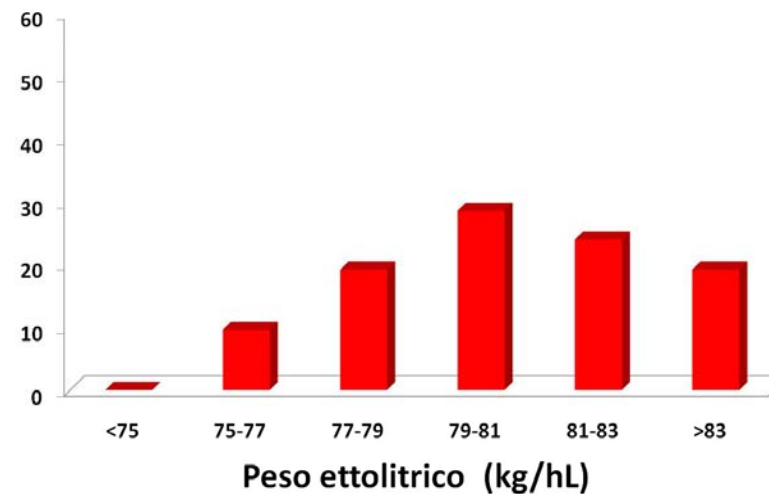
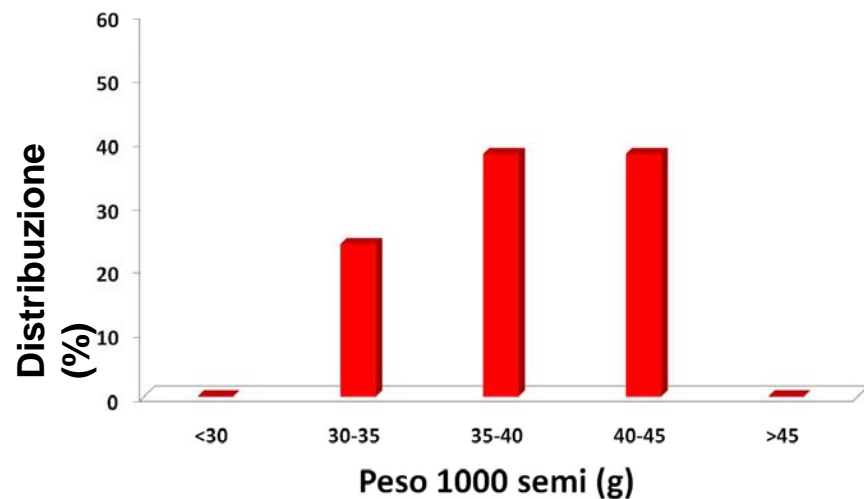
Monitoraggio 2010: 183 campioni
22 varietà

SUDDIVISIONE		PRINCIPALI VARIETÀ MONITORATE
CLASSI QUALITATIVE	%	
FF	23	BOLOGNA
FPS	14	BLASCO
FP	54	AUBUSSON
FB	5	ARTICO
FAU	4	

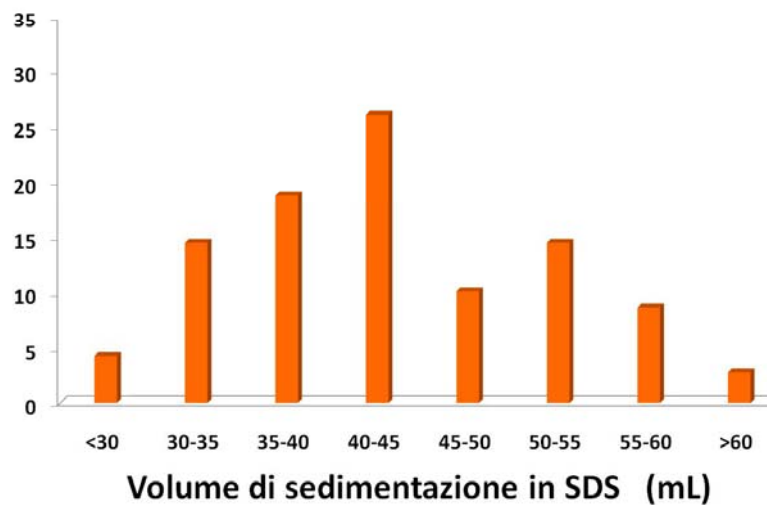
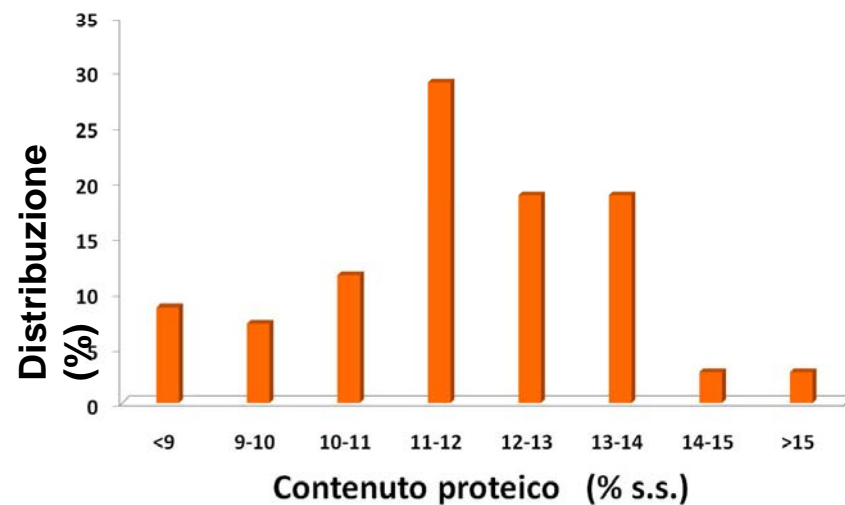
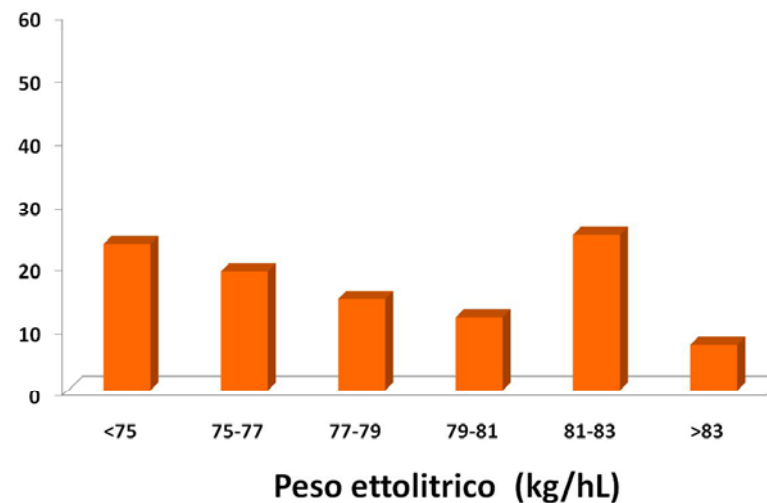
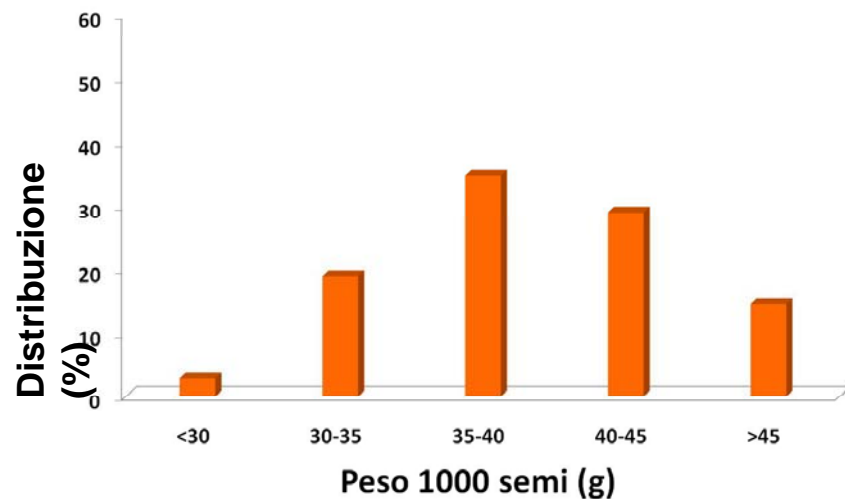
Nord ITALIA FF



Nord ITALIA FPS

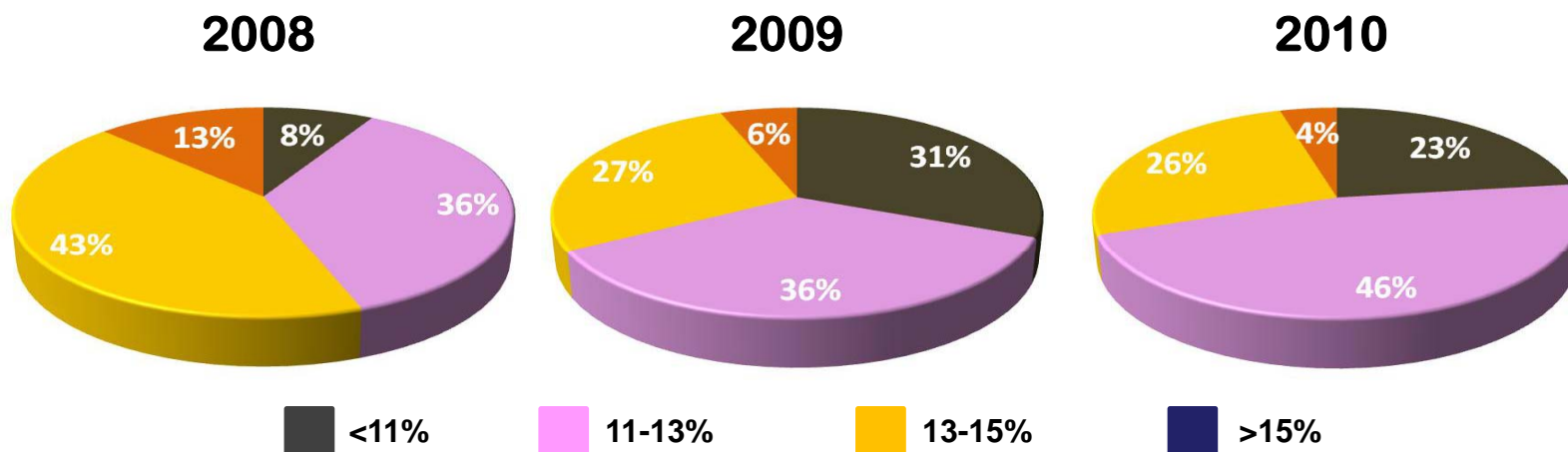


Nord ITALIA FP

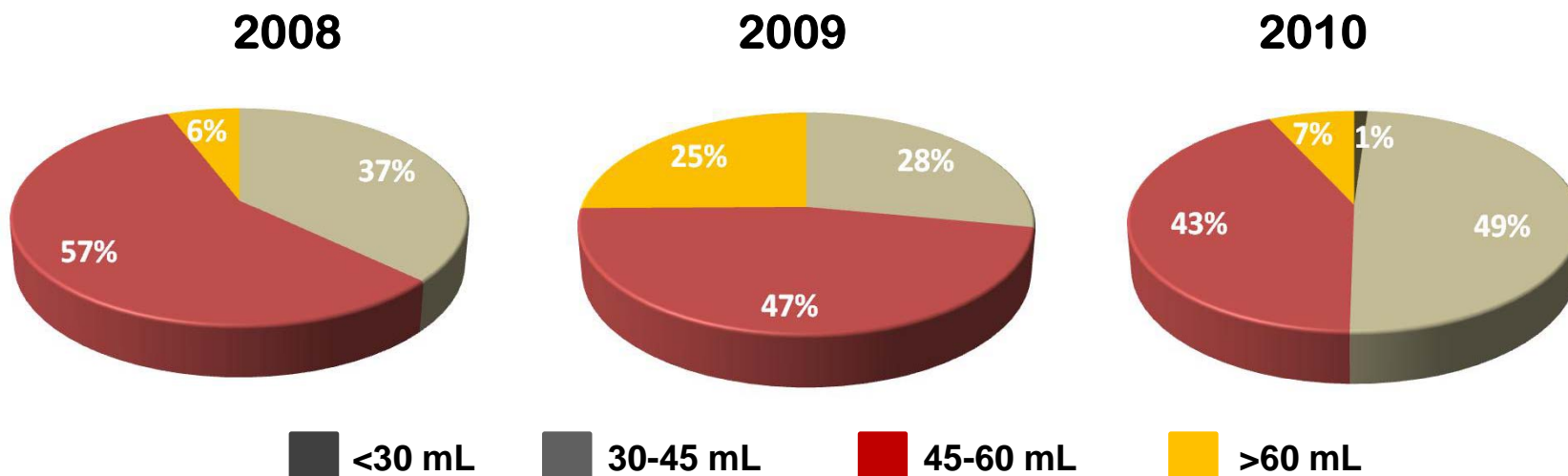


triennio 2008 - 2010

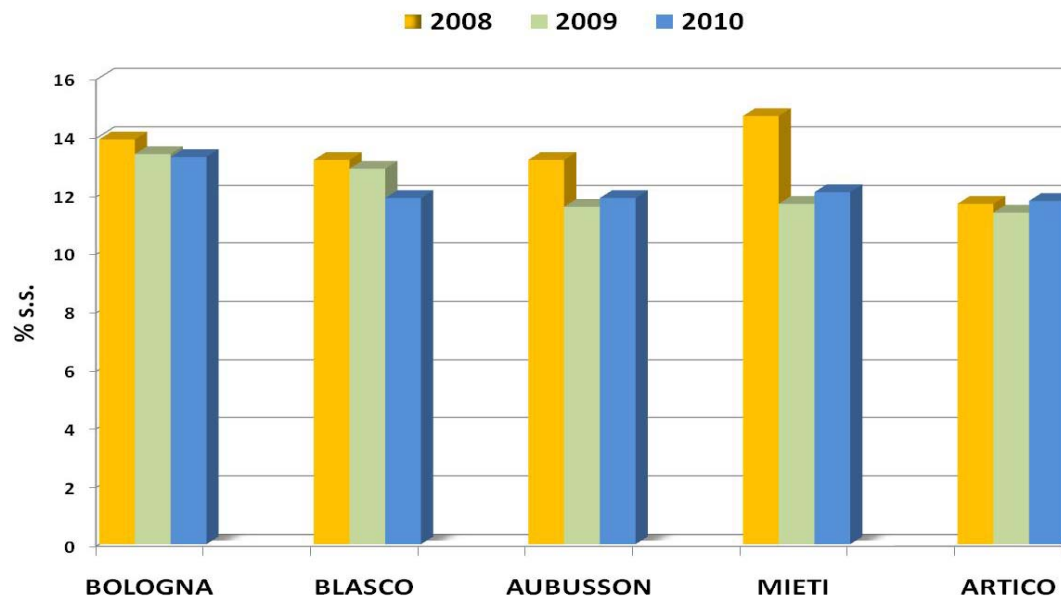
Contenuto proteico



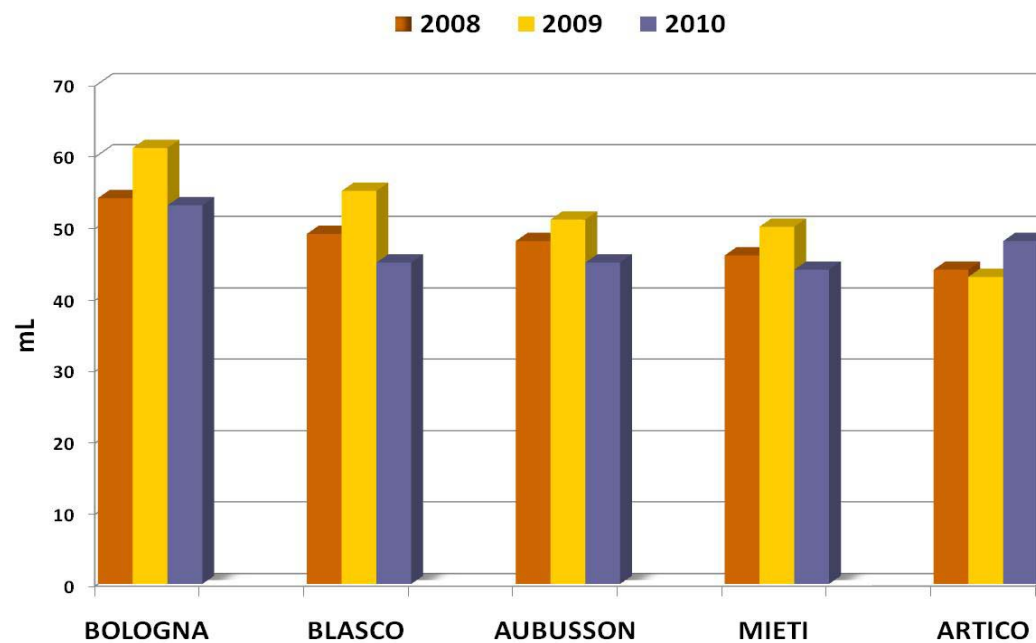
Test SDS



Contenuto proteico di alcune varietà

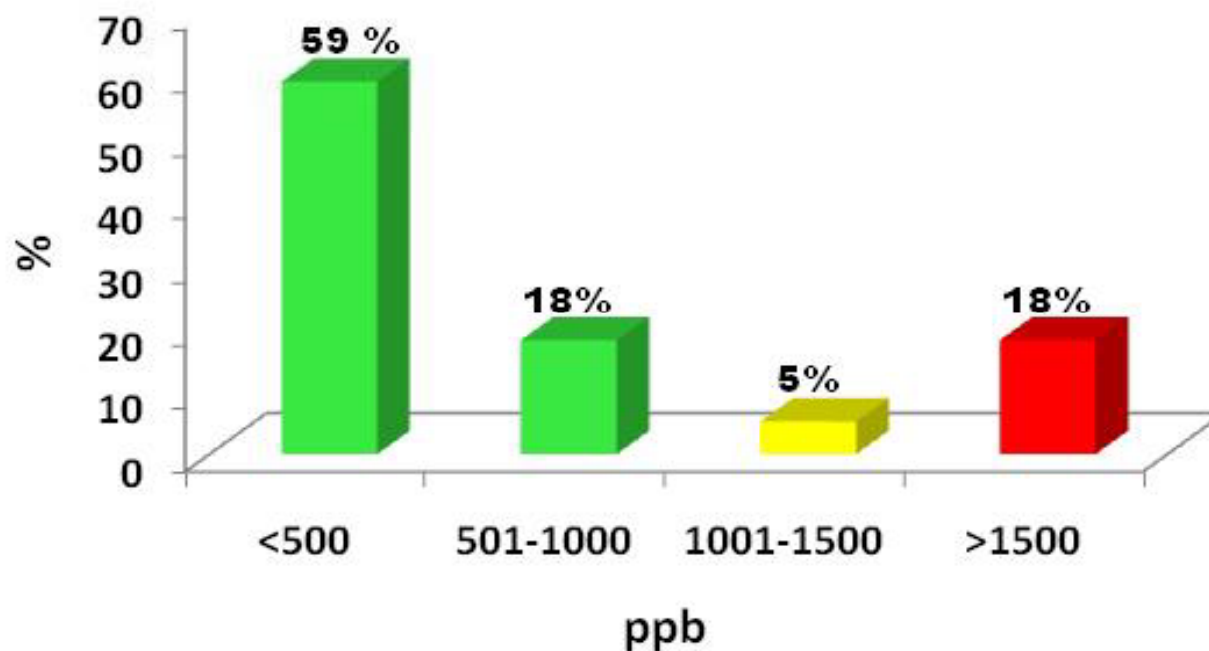


SDS di alcune varietà



Analisi micotossine: DON (Deossinivalenolo)

dei campioni monitorati provenienti dalle zone del Nord Italia



Limite di Legge frumento tenero 1250 ppb



Conclusioni

- x** Qualità complessiva per il 2010 buona per aspetti merceologici meno soddisfacente per contenuto proteico soprattutto in frumento duro
- x** Presenza importante di micotossine solo in alcune zone



Hanno collaborato

Frumento duro

- Andreina Belocchi
- Mauro Fornara
- Fabrizio Quaranta
- Cristina Cecchini
- Ester Gosparini

Frumento tenero

- Rosita Caramanico
- Leonardo Ormoli
- Luca Plizzari
- Patrizia Vaccino